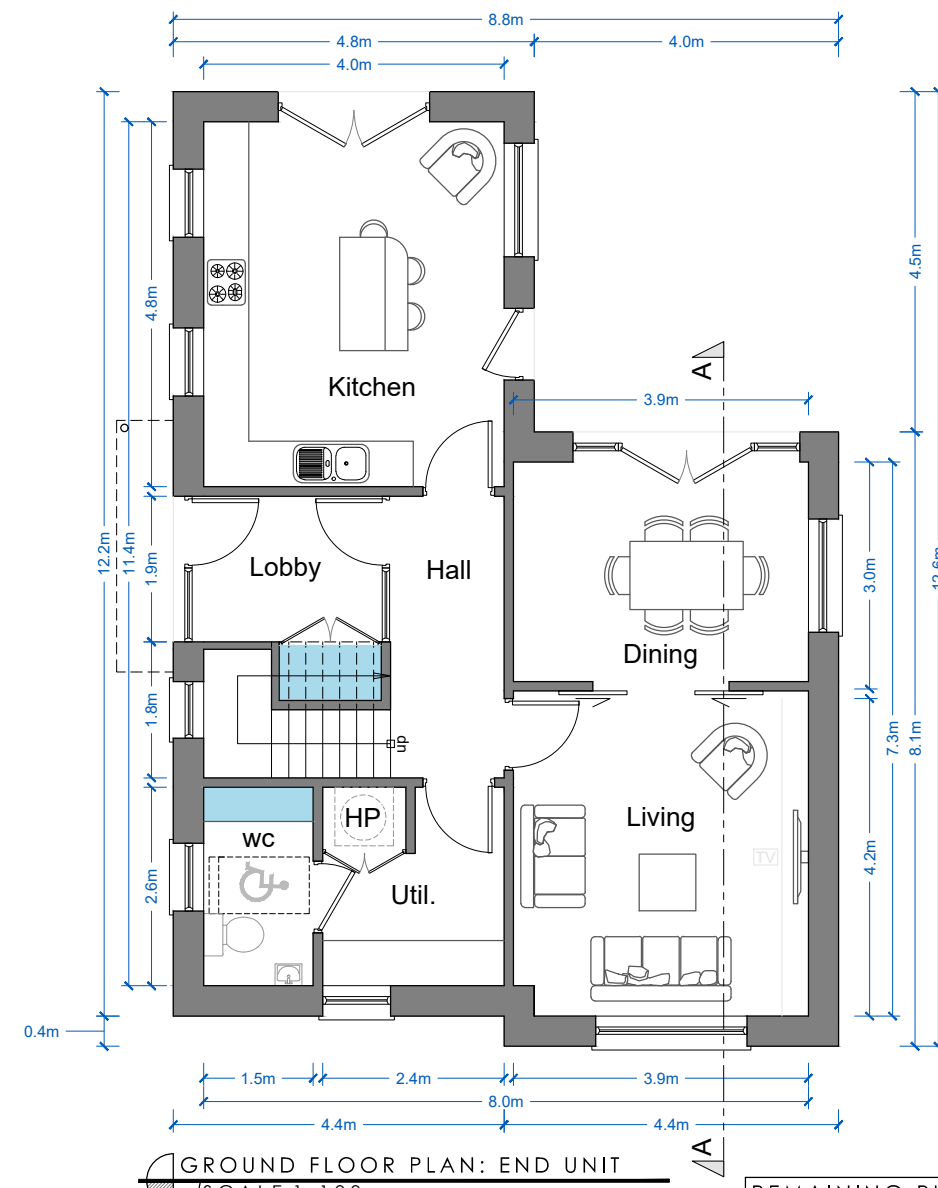
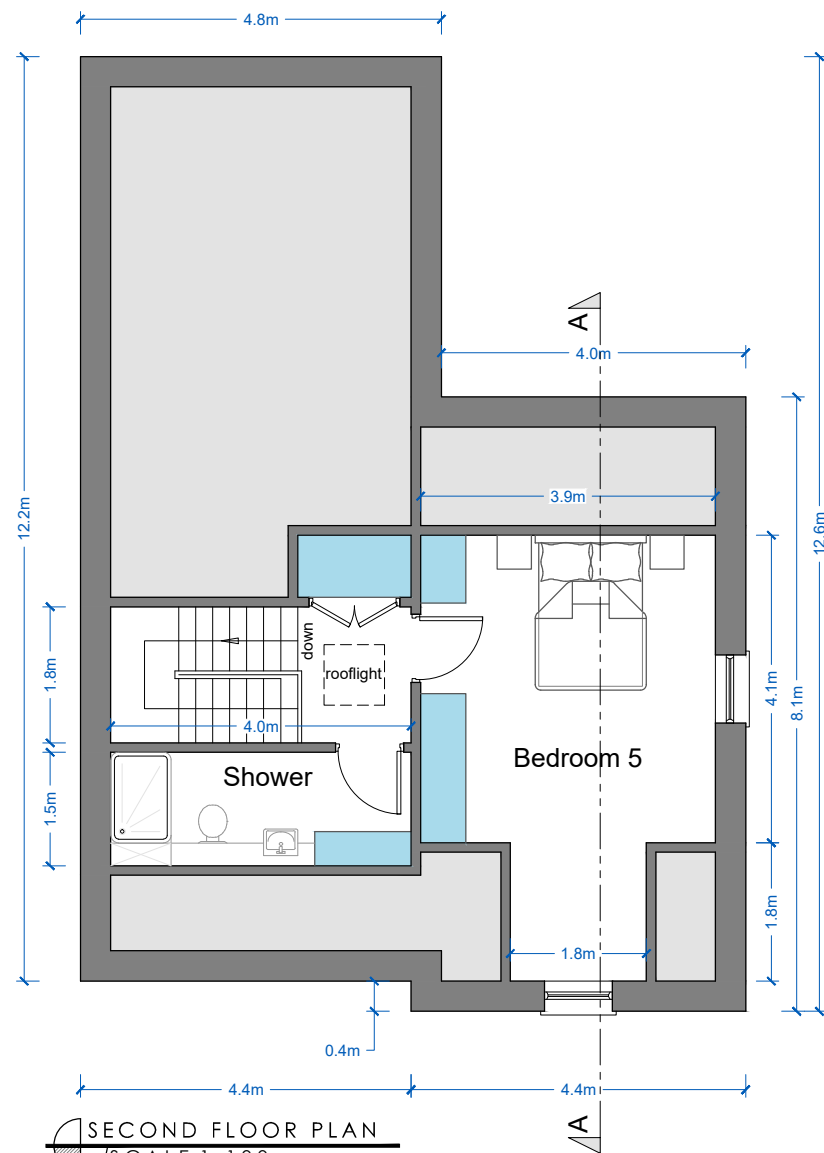


All dimensions to be checked on site. Figured dimensions take preference over scaled dimensions. Any errors or discrepancies to be reported to the Architects. This drawing may not be edited or modified by the recipient.

"Copyright and ownership of this drawing is vested in STRUTEC, whose prior written consent is required for its use, reproduction or for publication to any third party. All rights reserved by the law of copyright and by international copyright conventions are reserved to STRUTEC and may be protected by court proceedings for damages and/or injunctions and costs."

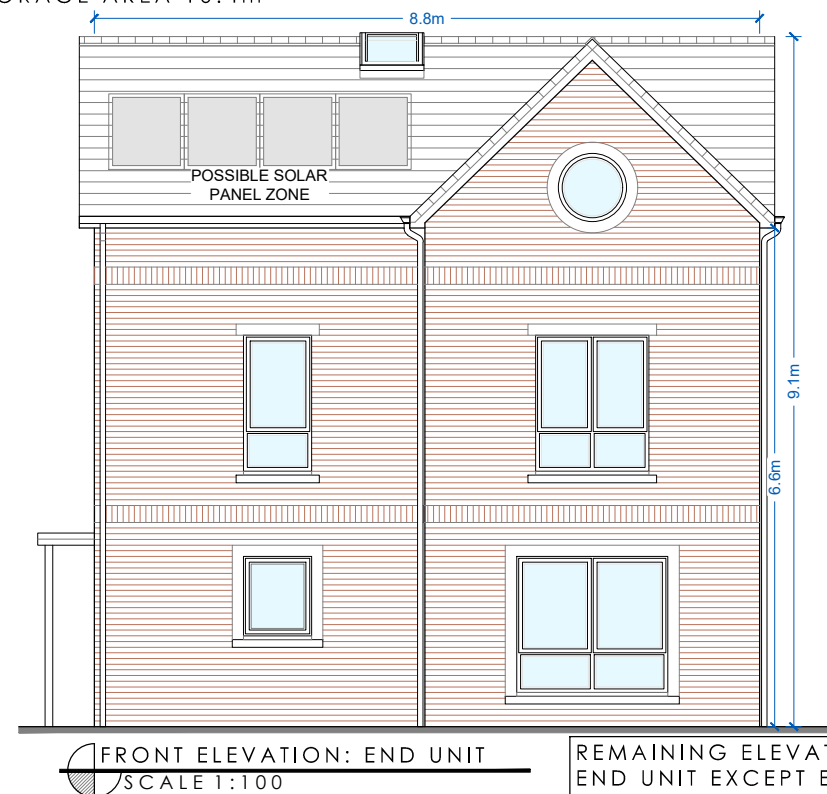
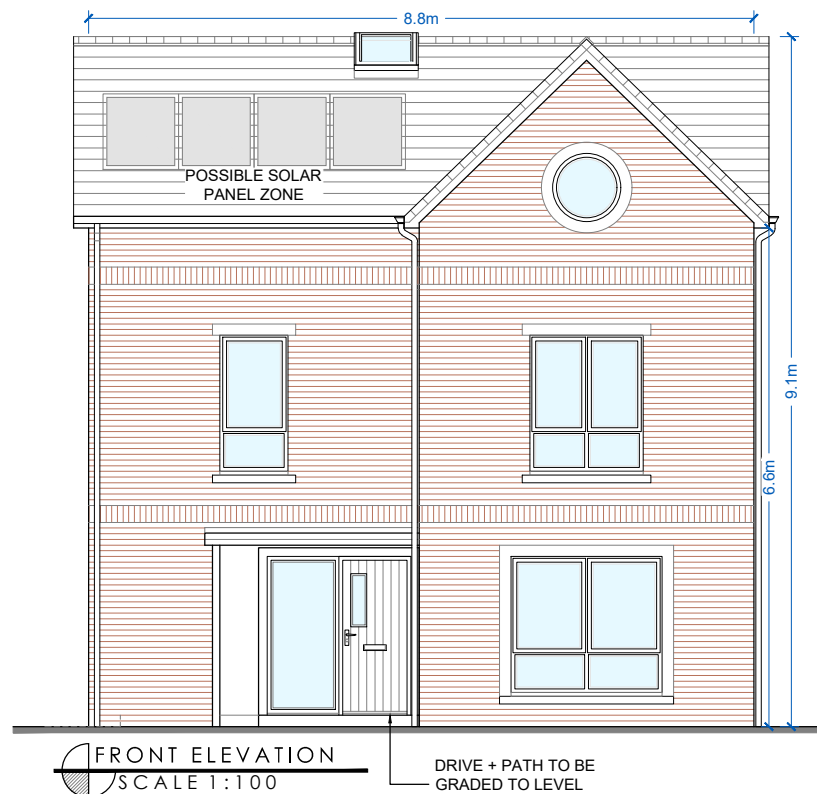
NOTE

LEVELS, ORIENTATION AND SITUATION (E.G. DETACHED, SEMI-DETACHED OR TERRACED) VARY PER UNIT. REFER TO SITE PLAN FOR LEVELS, ORIENTATION AND SITE CONTEXT INFORMATION.



REMAINING PLANS OF END UNIT AS PER STANDARD J TYPE

- FINISHES:**
- ROOF:**
- FIBRE CEMENT SLATES OR SIMILAR IN SELECTED COLOURS.
 - UPVC/ALUMINIUM FASCIAS, SOFFITS AND RAINWATER GOODS OR SIMILAR IN SELECTED COLOURS.
- WALLS:**
- EXTERNAL WALLS TO BE GENERALLY BRICK AND RENDERED IN SELECTED COLOURS. RED/BROWN BRICK GENERALLY.
- DOORS AND WINDOWS:**
- ALL FRONT ENTRANCE DOORS TO BE HARDWOOD OR SIMILAR, IN SELECTED COLOURS.
 - OTHER DOORS AND WINDOWS TO BE T/G UPVC OR SIMILAR IN SELECTED COLOURS.
 - STONE-EFFECT WINDOW/DOOR SURROUNDS/HEADS IN SELECTED SANDSTONE COLOURS WHERE INDICATED. CILLS TO MATCH.



REMAINING ELEVATIONS OF END UNIT EXCEPT ENTRANCE SIDE AS PER STANDARD J TYPE

REV	DATE	REV BY	DESCRIPTION
-	-	-	-
STATUS PLANNING			
PROJECT		CREAGH STRATEGIC HOUSING RESIDENTIAL DEVELOPMENT	
PROJECT ADDRESS		BALLOWEN/RAMSFORTPARK, GOREY, CO. WEXFORD	
DWG TITLE HOUSE TYPE J: FLOOR PLANS AND ELEVATIONS			
DWG NO PL2-191			REV -
JOB NO 1725		SCALE @ A3 1:100	
DATE 30.11.2018		DRN Liam Minogue	
 STRUTEC Architects - Engineers - Project Managers		STRUTEC, Architectural & Engineering Consultants, Garryhill, Bagenalstown, Co. Carlow, R2 KP44 Ireland Tel +353 (0)59 97 27623 W www.strutec.ie E info@strutec.ie	